

An aerial view of a city skyline with several buildings highlighted by yellow outlines. The background is a grayscale image of a city with a prominent tower in the distance. The text is overlaid on the center of the image.

# Simplifying Utility Management

WeBill's SaaS solution uses cutting-edge technology to streamline all aspects of utility management, offering a cost-effective approach to simplifying complexities.

**webill**

READ | RATE | RECOVER | RECOMMEND

# WeBill focuses on Distribution

South African-based startup founded in October 2017.

Software as a Service for all stakeholders in the utility **Distribution** Sector.



## Read

Measure consumption.

## Rate

Charge for consumption.

## Recover

Collect for usage of utilities.

## Recommend

Artificial Intelligence (AI) and Machine Learning (ML) for utilities.

## Why we founded WeBill

---



*"But they (traditional utility companies) do have one point: it's complicated. And it's complicated because to pay out correctly, you have to monitor usage very accurately."* - Hans Joseff Fell, Green Party Germany and proponent of feed-in tariffs (FIT) referring to traditional utilities opposing change.

- Widespread utility billing issues in South Africa and worldwide.
- Hardware (smart meters) and ERP systems thrown at the problem to no avail.
- Initiatives to tackle aspects of the problem failed because inherent integration between read, rate and recover is ignored.
- Thousands of different tariffs and the increasing introduction of alternative energy feed-in and net-billing are absent from existing solutions.

A single evolving ecosystem harnessing the latest computing innovations is the only way to address the problem.

*"A daunting and complex challenge."*

## Our Solution

---

*Lower the barrier of entry by providing a complete ecosystem using state-of-the-art technology at the lowest comparable cost.*



- Provide for postpaid, prepaid, time-of-use, feed-in, net-billing and banking of clean energy credits and wheeling scenarios.
- Granular charging for all billing strategies.
- ML, AI, and IR for utility budgeting, forecasting and data interpolation.
- Transparency and control for the consumer and management of all providers from a single location.
- Bill verification and billing scenarios.
- Portfolio and sub-metering management.
- Tracking of assets and workforce.

# Our Team

## Founders & Management



**Ayal Rosenberg**

Founder and MD. Qualified Attorney and erstwhile member of the Israeli Bar Association. Previous startups: LiveBet(online gaming); QC Components (logistics software); EMS Invirotel (utility management for demand side management).



**Steven Gottschalk**

Founder and majority shareholder Africa's biggest logistics company: Value Logistics. Serial Entrepreneur: property; vintage cars; retail; vegan food; hotels; film studios.



**Lorraine Francois**

Development and Testing Manager. Formerly in positions of applications, development and project management.



**Allan Swanepoel**

Sales and Marketing Manager with 25 years in the metering industry.



**Thea Bezuidenhout**

Strategic Advisor

## Board of Advisors



**Dr Pieter Venter**

Electronics engineer. Inventor of smart devices for water. Developer of the WeBill IOT communication models.



**Erna Barnard (van Biljon)**

Registered South African attorney. Legal compliance, privacy and contracts.



**Arieh Eytan**

(Israel) Founder, MD and owner of Unique Technologies (electricity utility devices).



**George Harel**

(Israel) Pioneer in development of smart meters. 30 years experience.



**Craig Jankelow**

Chartered Accountant. Accounting and payment systems.



**Andre Hogewoning**

CIO Value Logistics. Expertise in technology, software infrastructure and compliance.

# Our Current Modules



## Core

The core and foundation of the ecosystem



## Device Management

Manages and reports on all data related to the devices



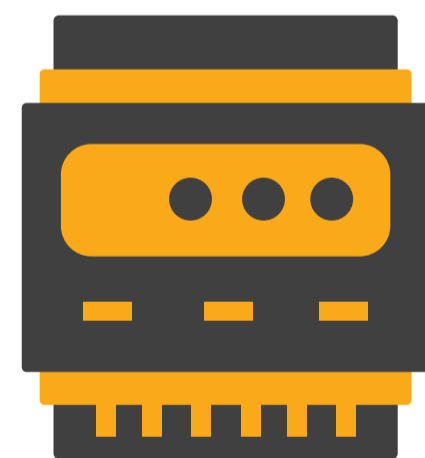
## Tariff

Global tariff search and tariff customisation



## Portfolio

Set-up, manage and report on utilities usage for property portfolios



## IoT Smart Meter

Patented smart device to facilitate prepaid time-of-use



## Consumer App

Pay for your utilities and manage your consumption



## Field Manager

Schedule, manage, and monitor workers in the field



## Billing

Prepaid, postpaid, net and wheeling (LiveBill™)



## Faults

Utility fault reports, help desk and ticket management

# Pending Modules



COMING SOON

## Budgets and Forecasting

AI and machine learning for budgeting and forecasting



COMING SOON

## Revenue Management

Consolidated billing, arrears adjustments, estimates, recoveries, and revenue balancing



COMING SOON

## Asset Management

Manage your meters, SIM cards, seals, modems and data concentrators

# Our Solutions Support



**Body Corporate /  
Homeowners  
Associations**



**Managing Agents**



**Independent Power  
Producers**



**Property Developers**



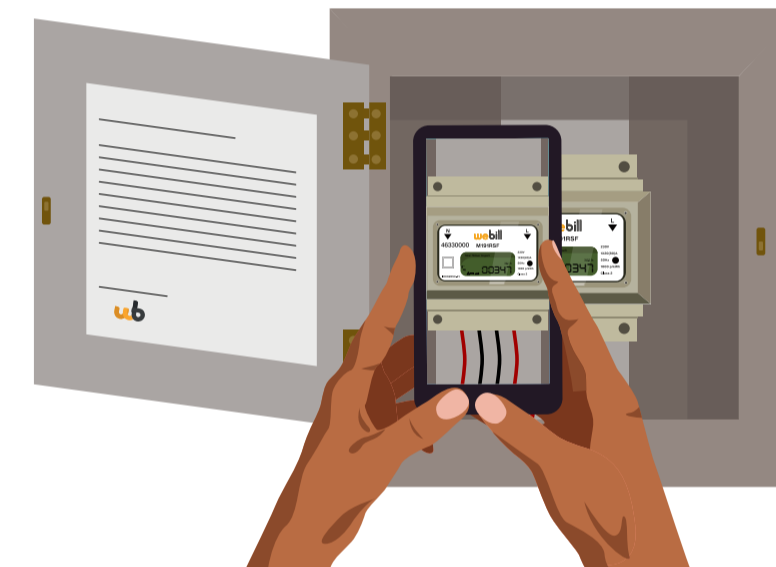
**Property Managers**



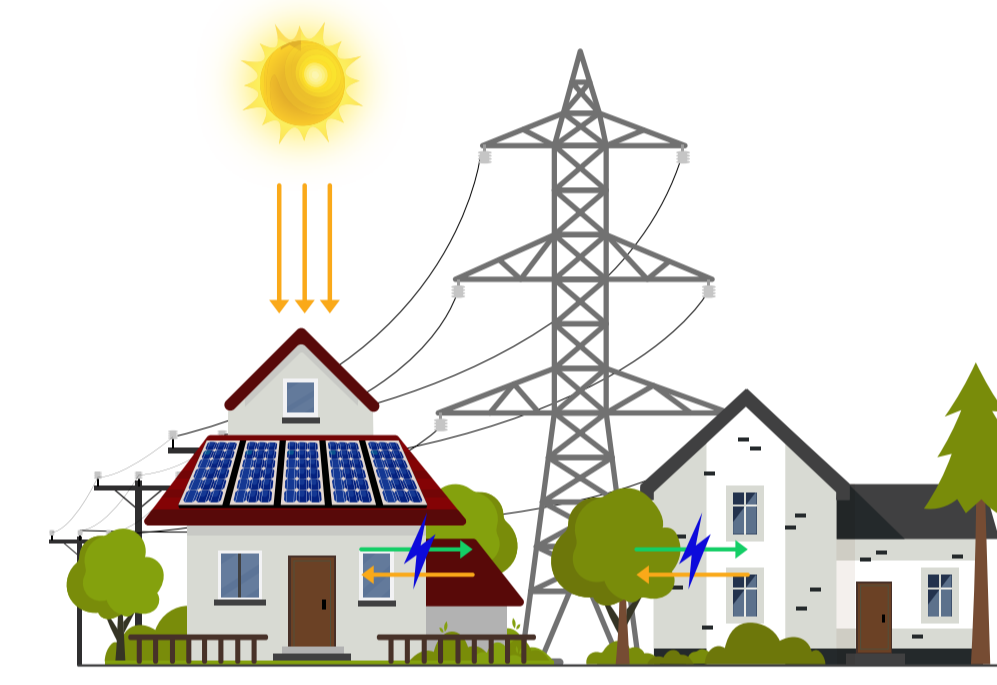
**Municipalities /  
Utility Providers**



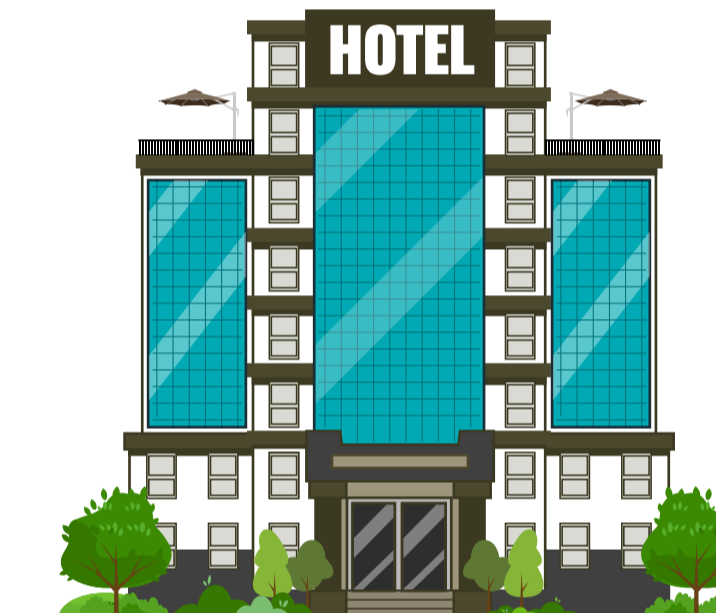
**Multi-purpose  
Properties**



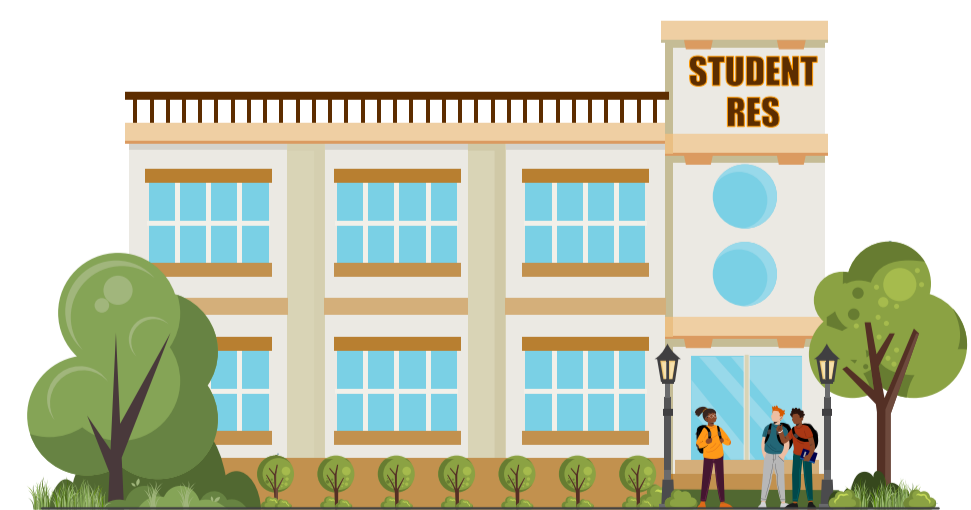
**Meter Reading Companies**



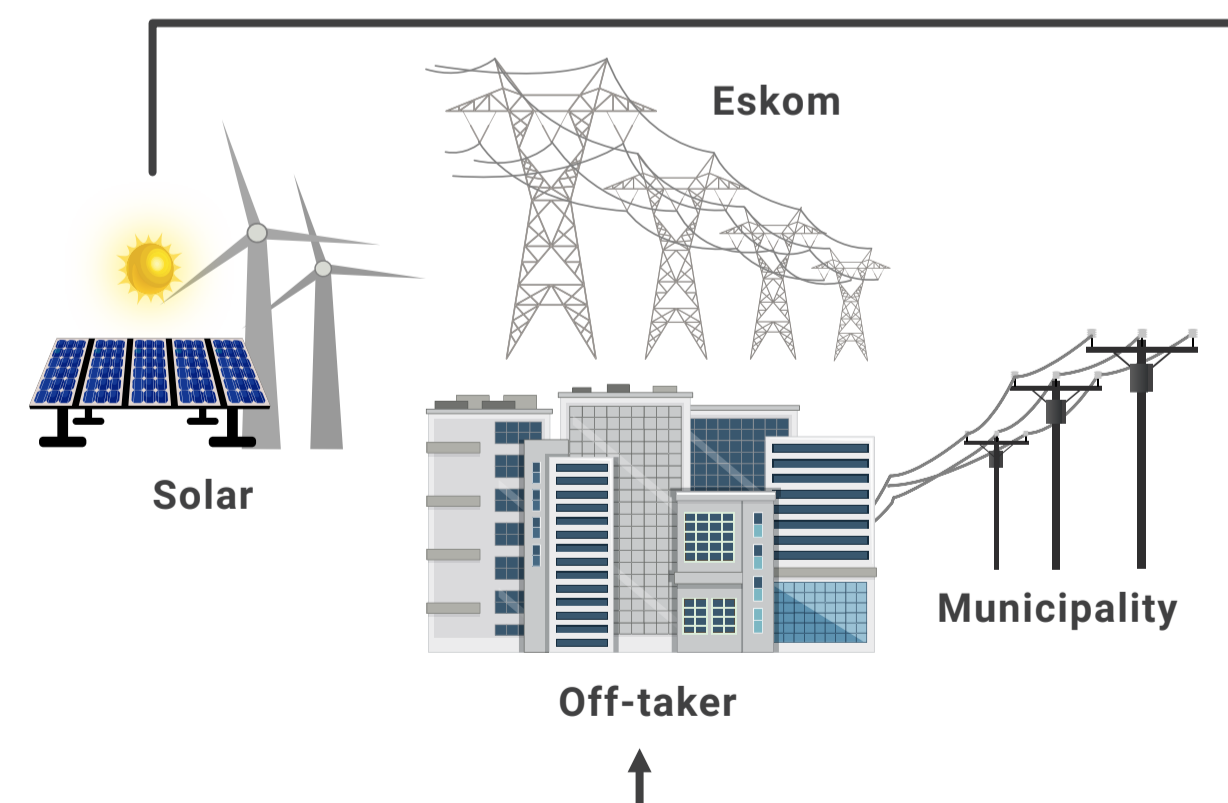
**Net-Billing**



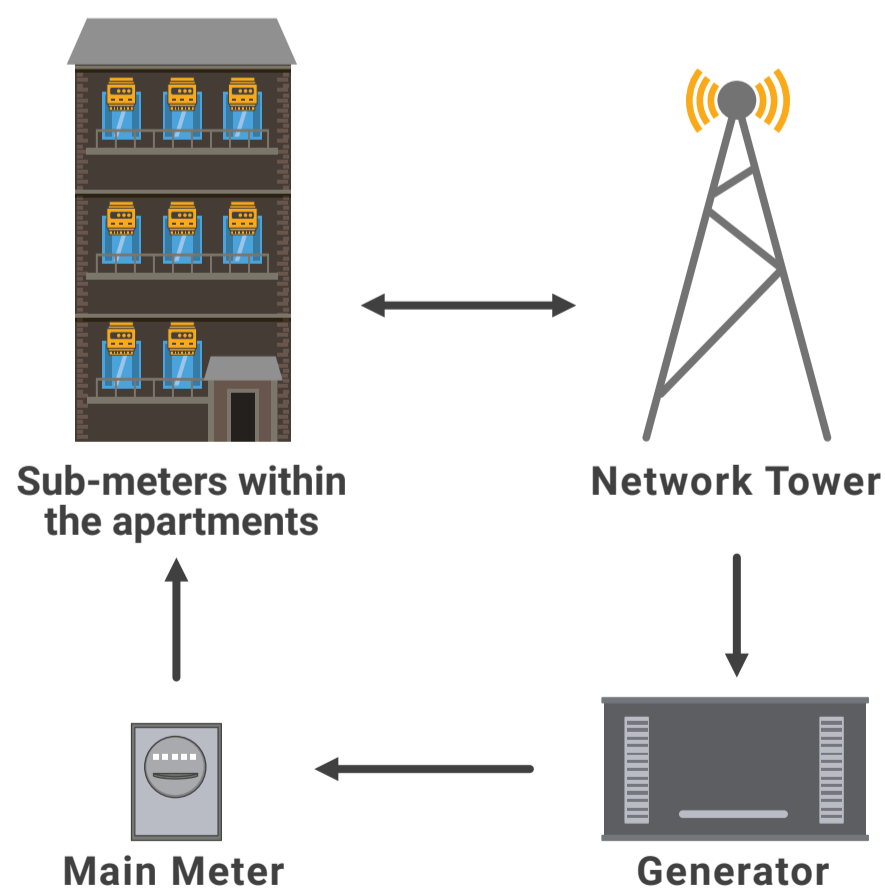
**Accommodation and  
Community Utilities**



**Student Accommodation**



**Wheeling Electricity**



**Network Communications**

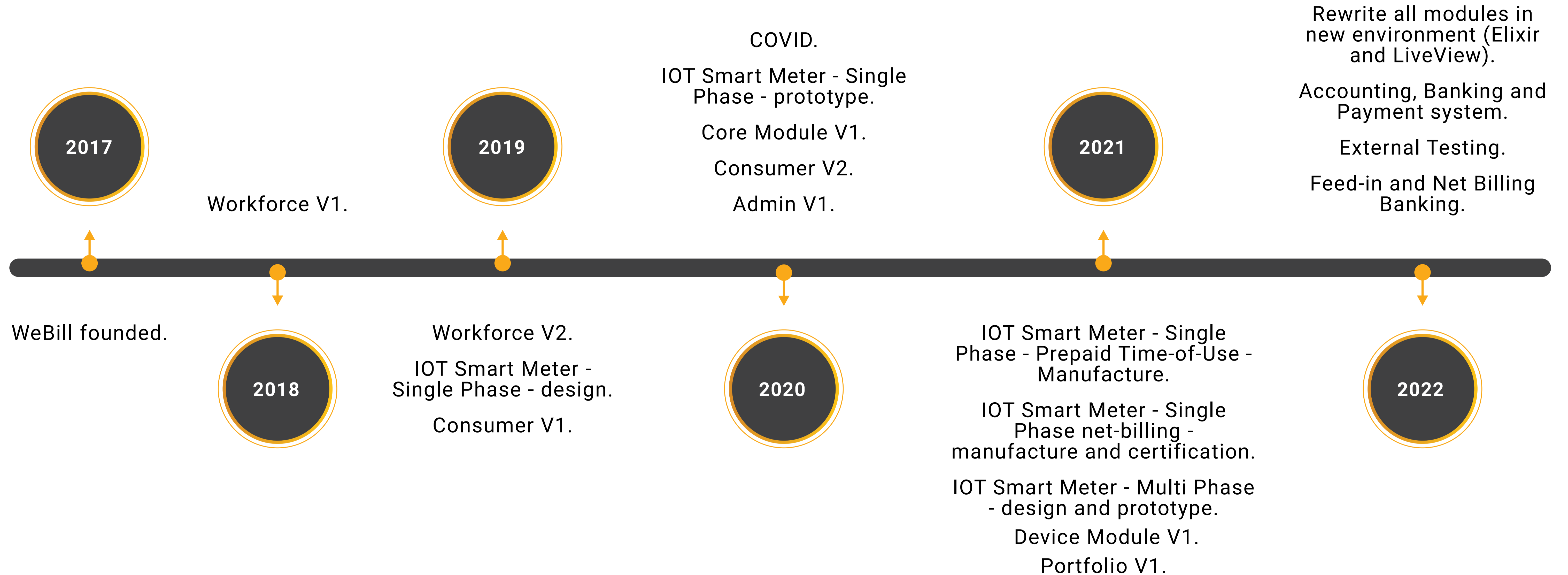


**Commercial Rental Outlets**



**Residential Rental  
and Mobile Homes**

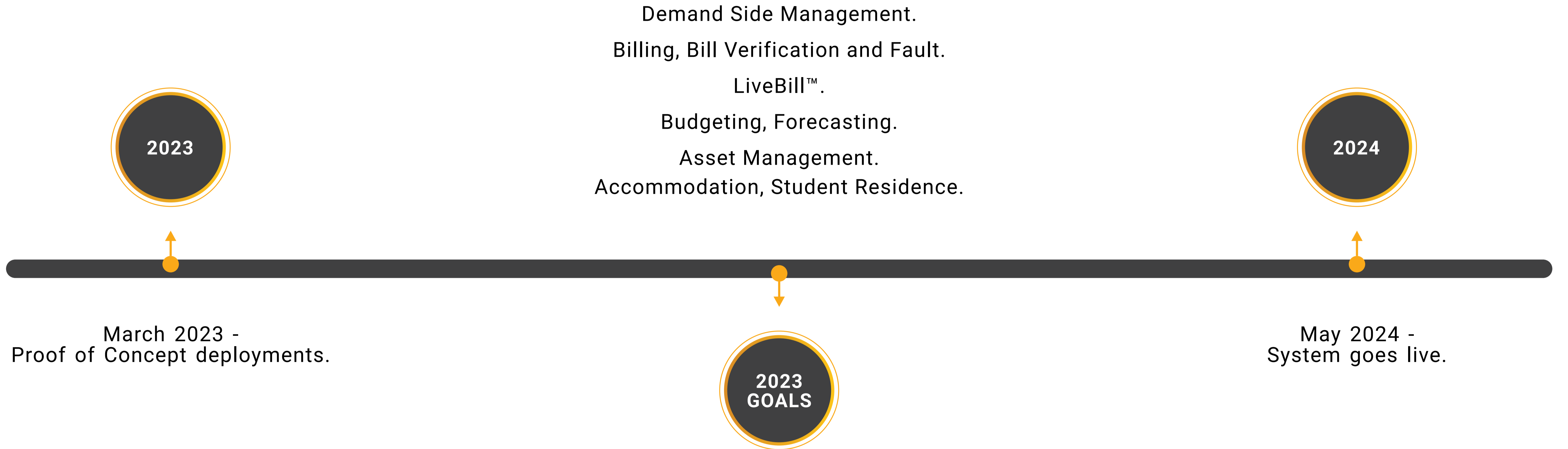
# Our Historical Development Timeline





# Our Current Developments

---



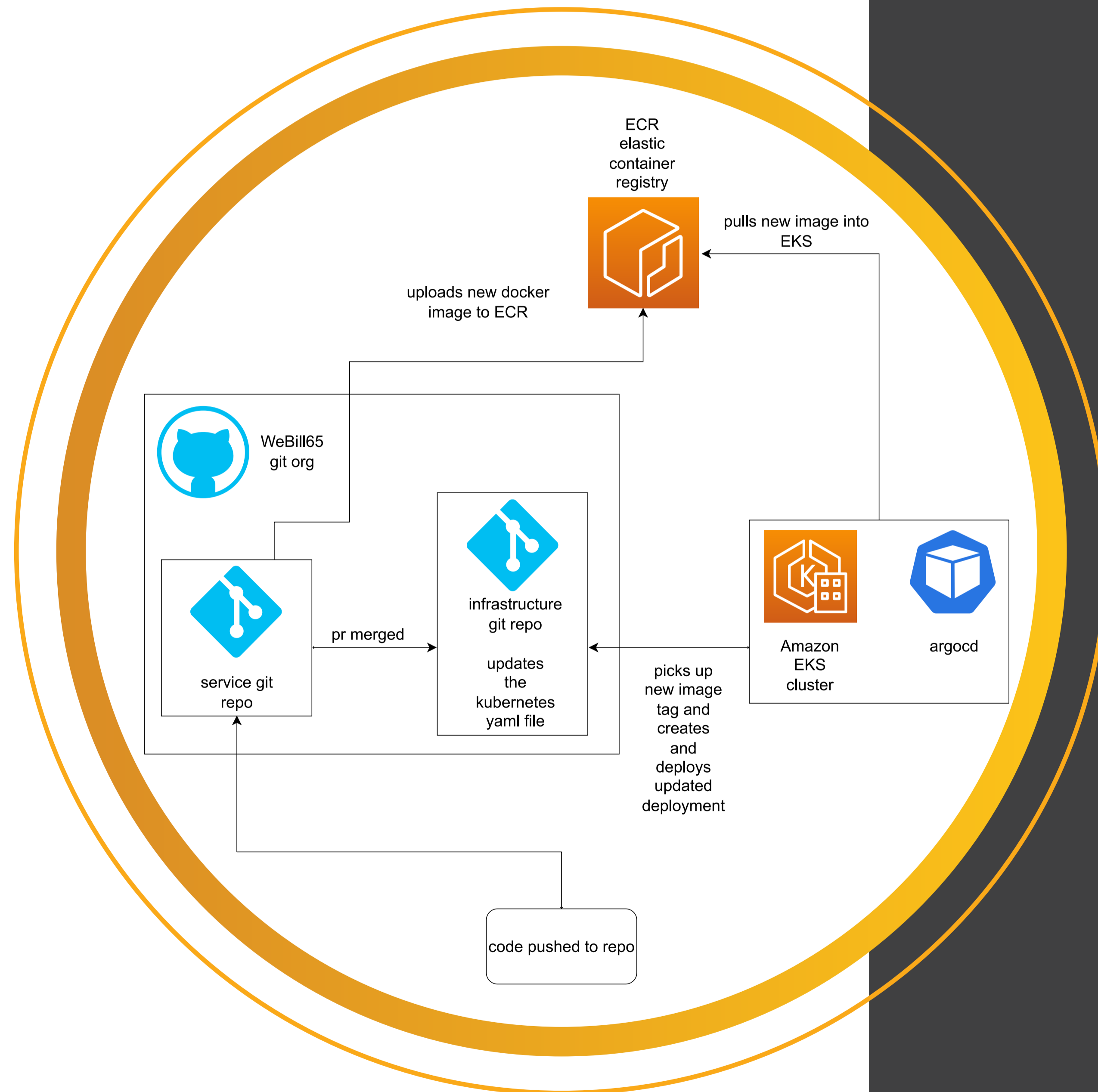
## Our IP

---



- **South African registered patent:** Prepaid time-of-use with net-billing.
- European and US patent pending.
- LiveBill™ (Dynamic queryable, payable electronic utility consumer bill).
- Missing utility reading date interpolation using machine learning.
- Straight-through bill processing from manual read.
- Live usage readings (currently every 30 min).

# Our Technology and Architecture



- **Primary development Languages:** Elixir, Phoenix LiveView and React Native.
- **Main Data Repositories:** Postgres, TimescaleDB, Redis, MongoDB, S3, Algolia.
- **Message Brokers:** RabbitMQ.
- **Micro-services** (over 500 and growing).
- **CI/CD:** Kubernetes Clusters, Terraform and ArgoCD.
- All assets and infrastructure deployed to AWS.

## Our Competitive Advantage

---



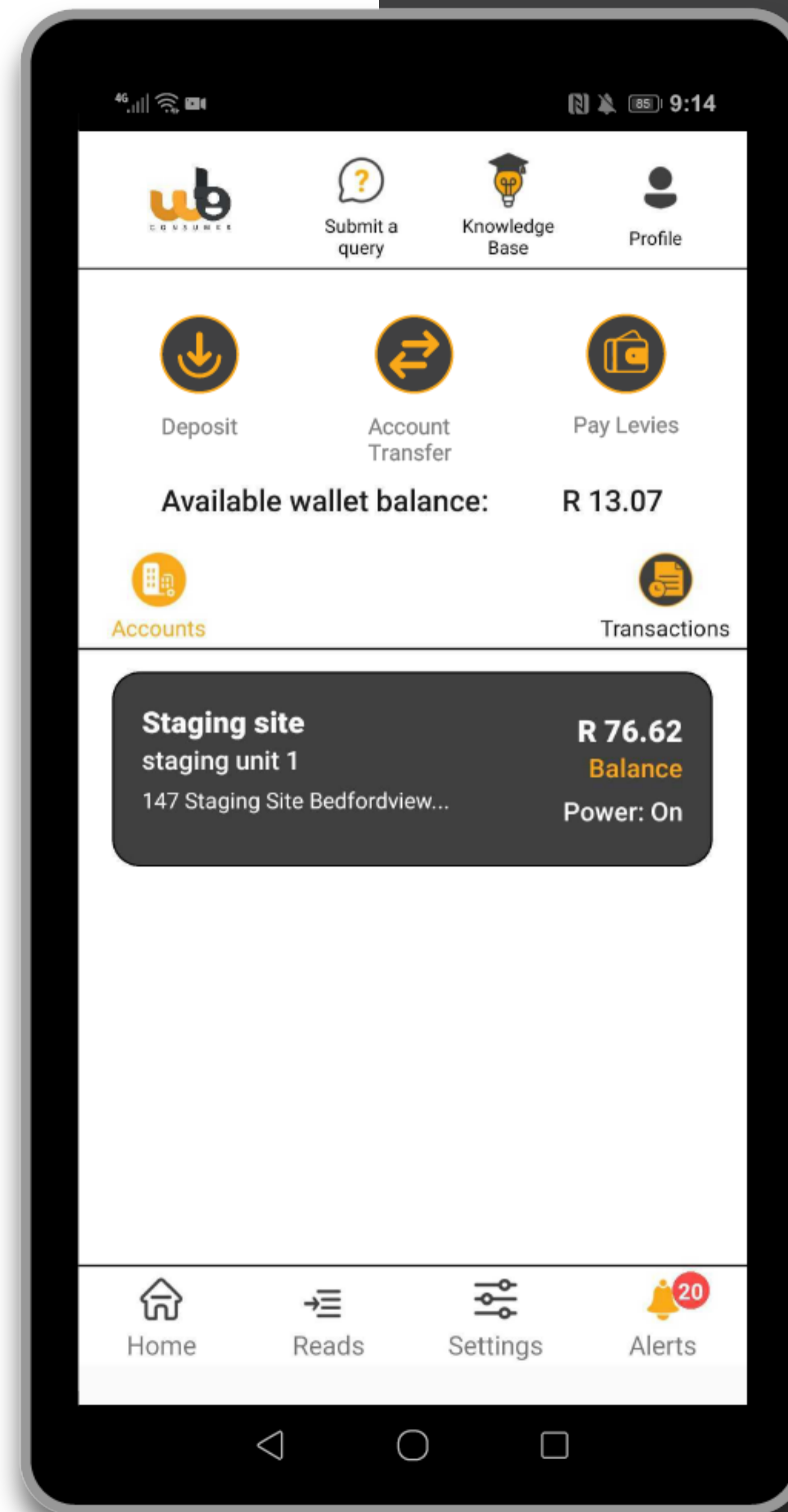
Our advantage over all the others:

- The most affordable pricing option by far.
- Alternative energy feed-in banking management.
- True IOT capabilities.
- Real-time charging of utilities (every 30 minutes).
- Proprietary hardware enabling patented time-of-use prepaid net-billing.
- Inter-Organisation exchange, for example, clients with subsidiaries, clients managing other clients.
- Single consumer experience across different utility companies.

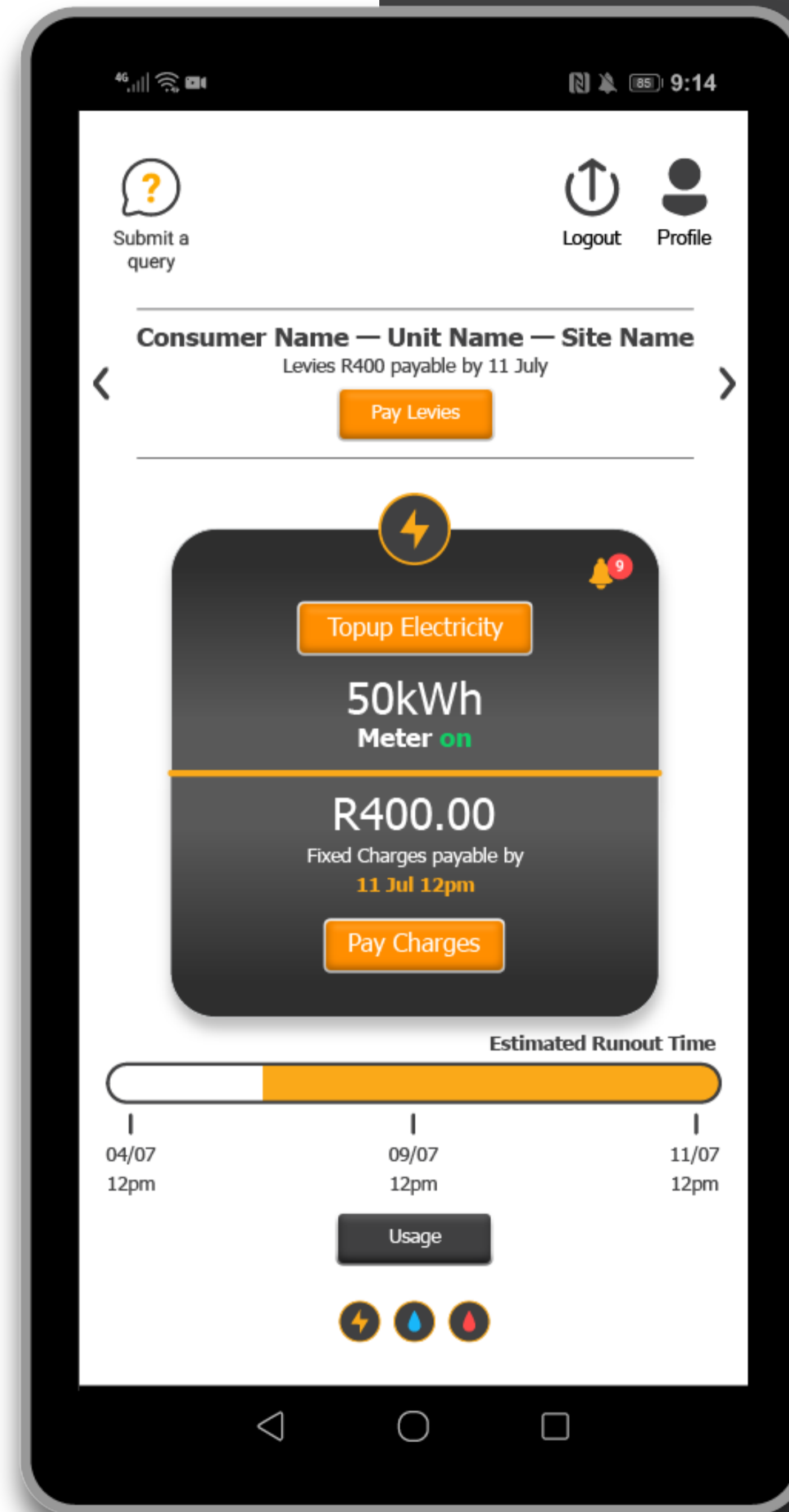
# Mobile Applications



- **Consumer App:** Manage and top up your accounts and meters. Get notifications and usage statistics on all your devices.

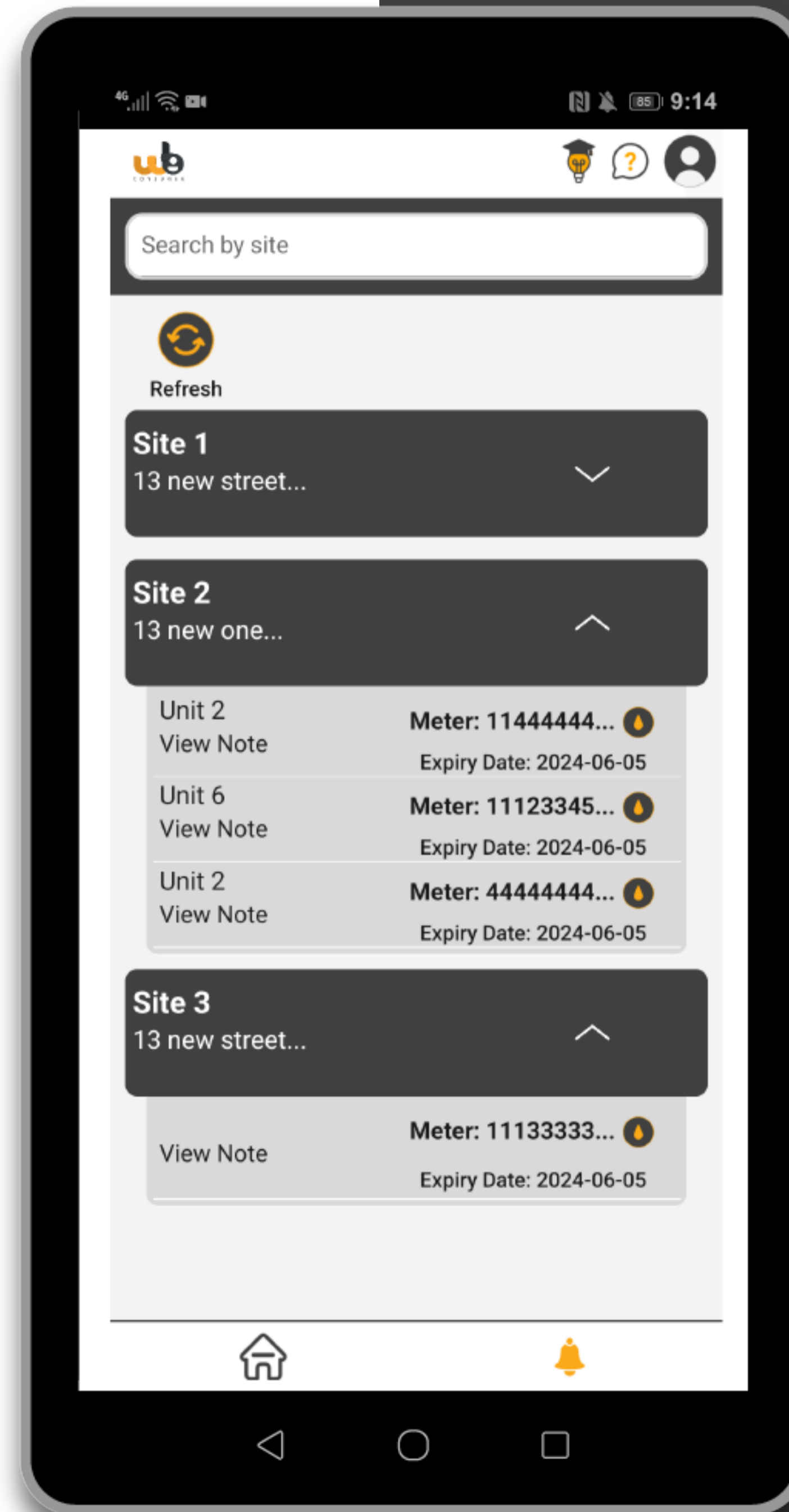


# Mobile Applications



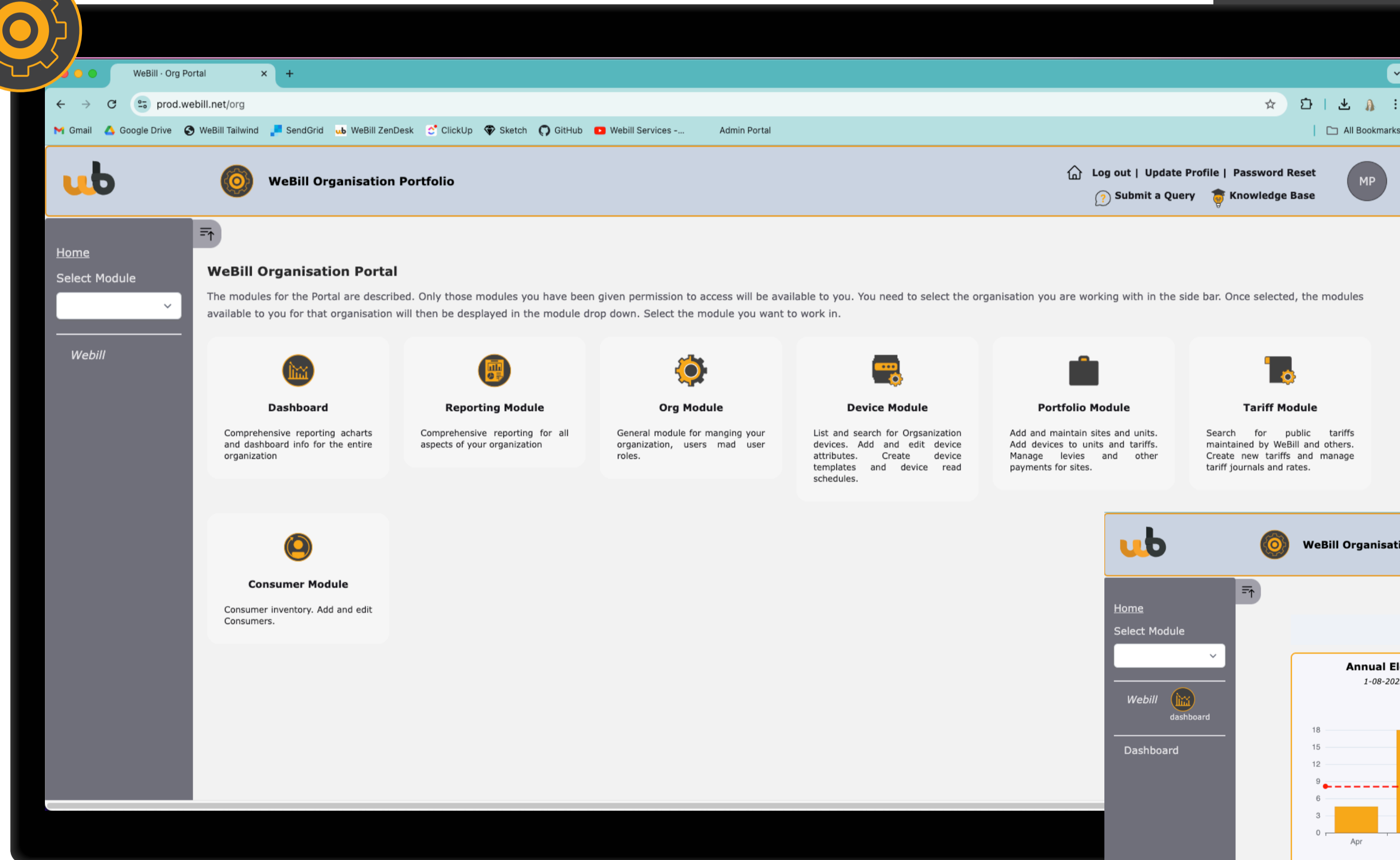
- **Consumer Lite App:** A simple easy to use mobile application to manage your meters and view your consumption.

# Mobile Applications

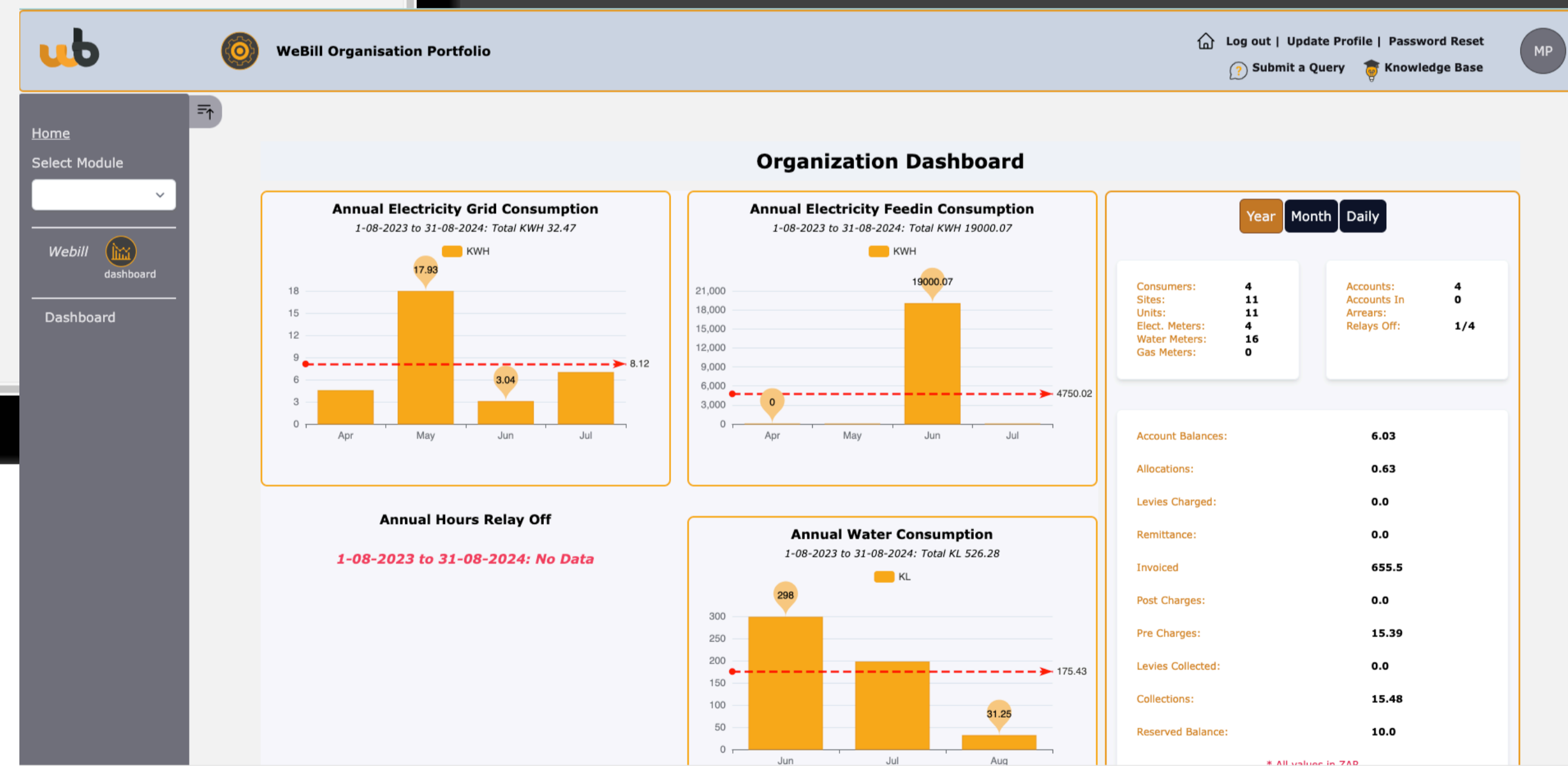


- **Workforce App:** Field workers application for manual meter reads, installations, disconnections and onsite audits.

# Web applications



- **Customer Portal:** Portal through which all aspects of an organisation can be managed, including Tariffs and Portfolios.

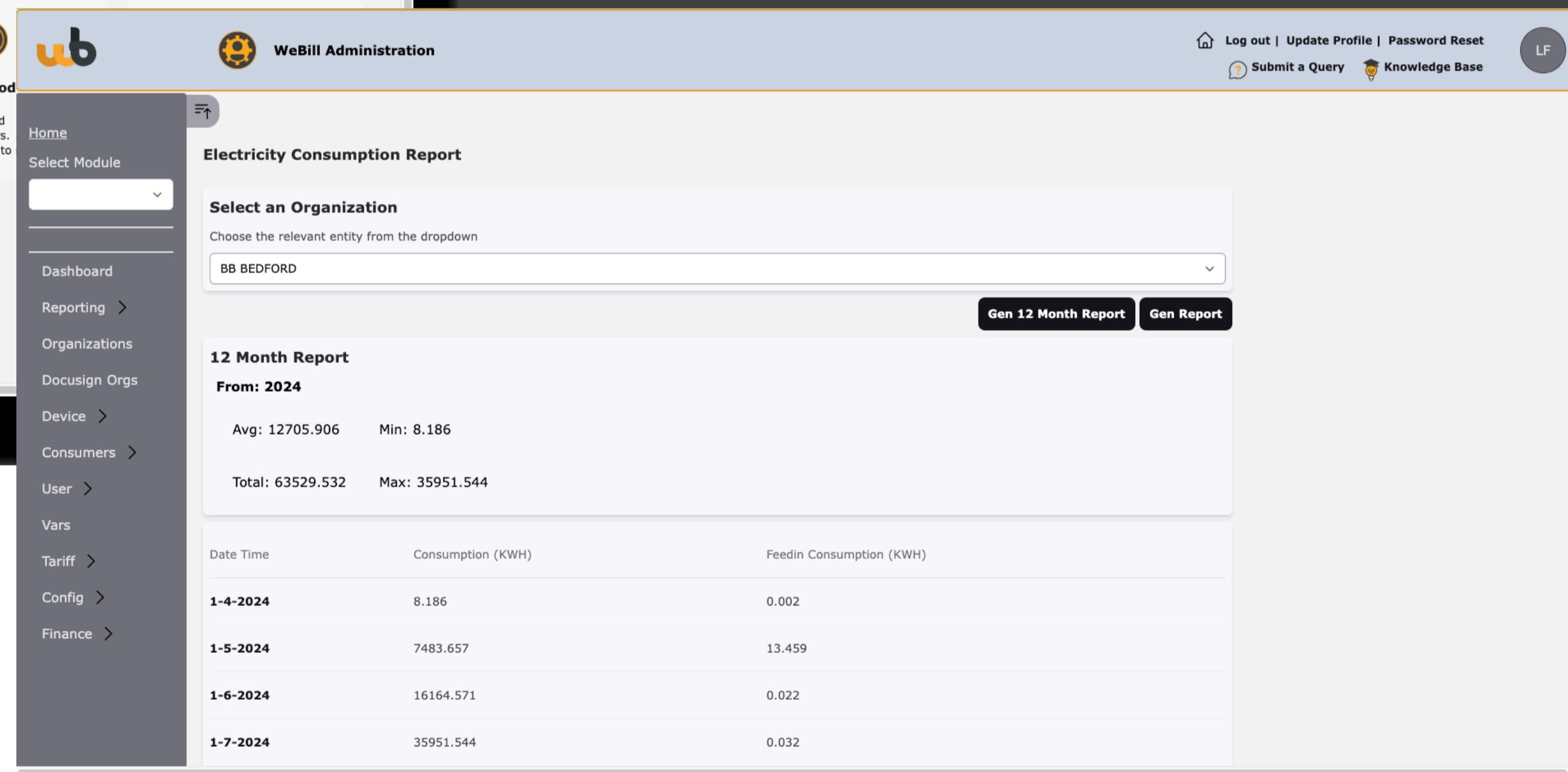
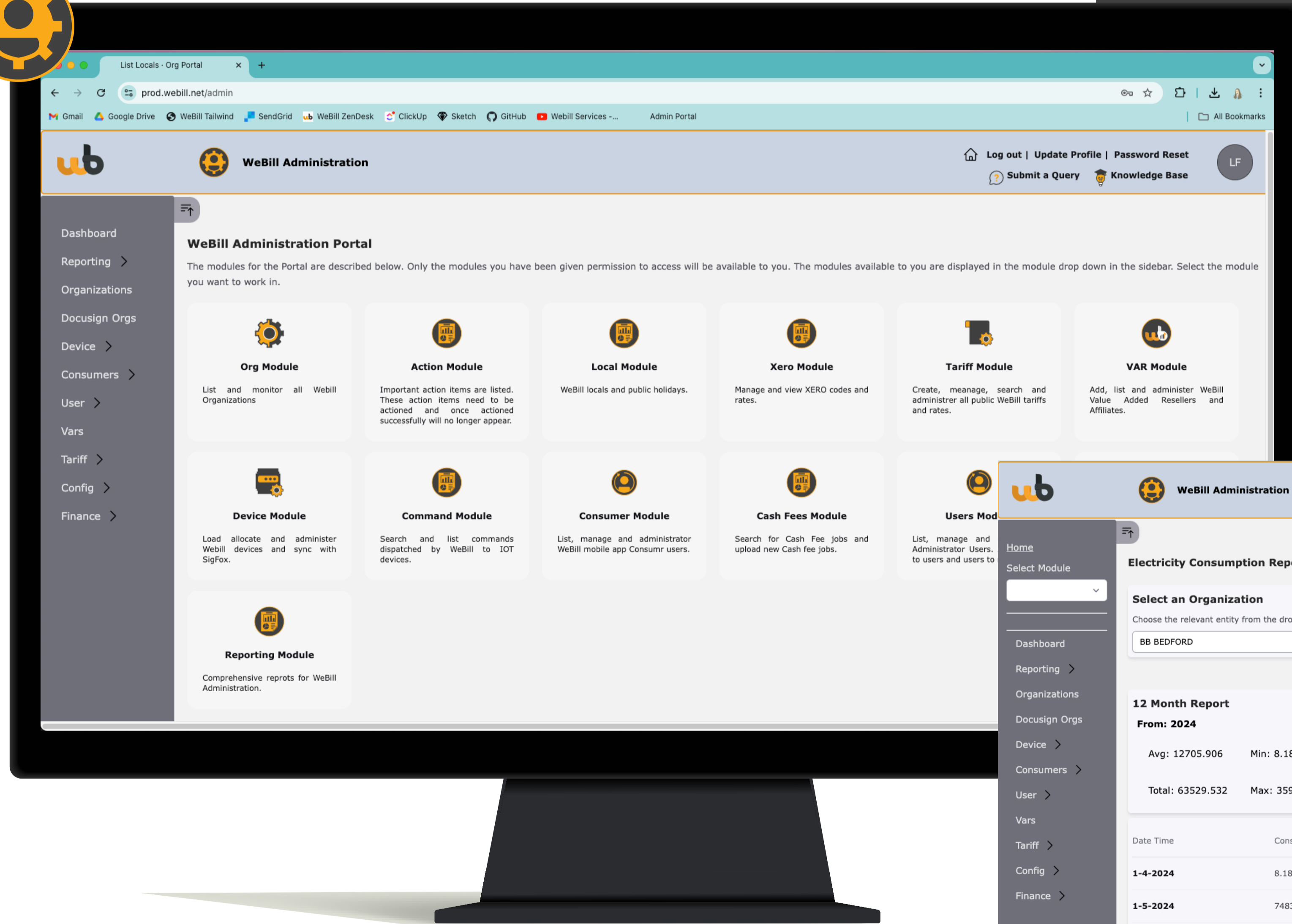




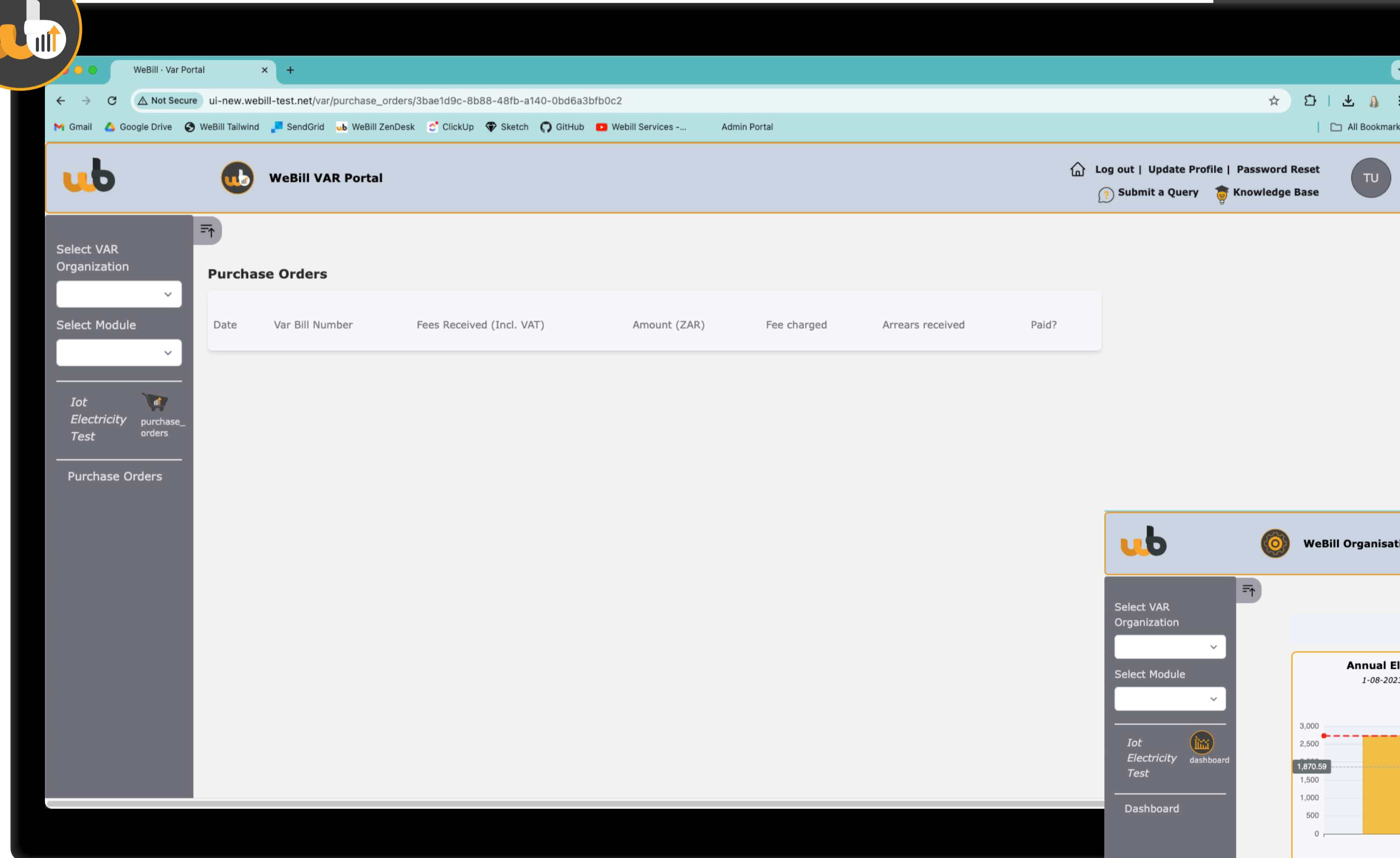
# Web applications



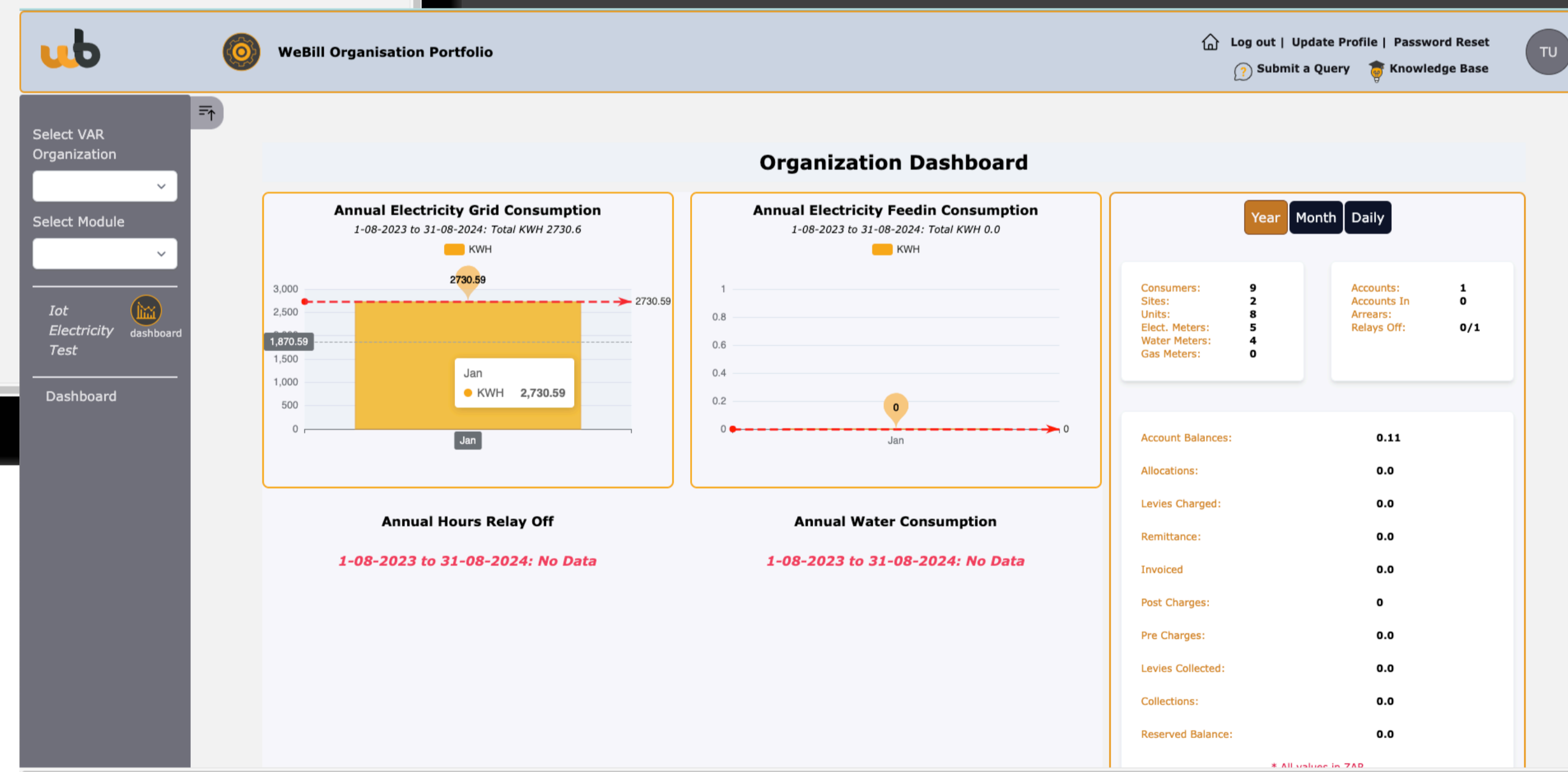
- **Administrator Portal:** for WeBill internal use.

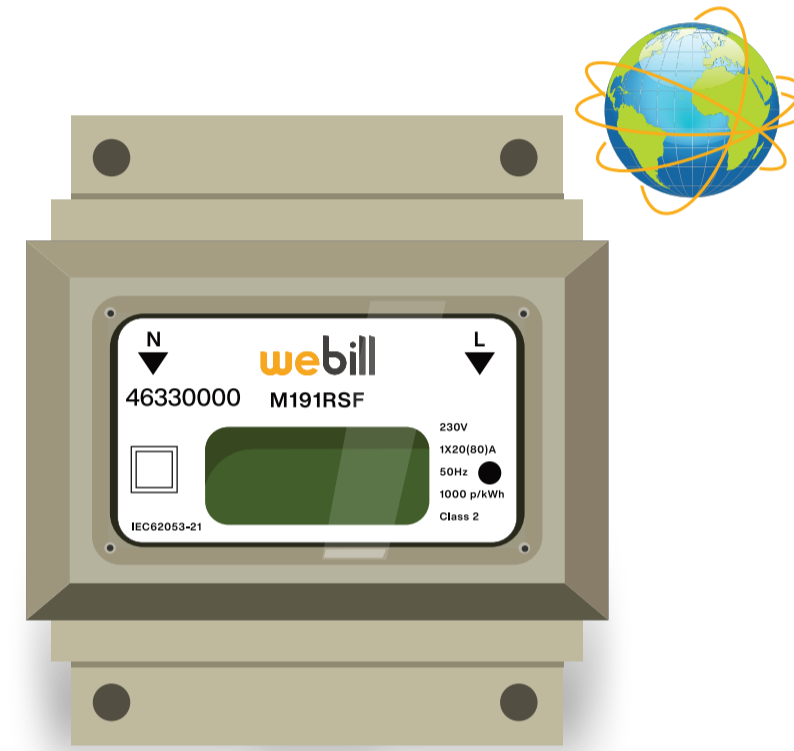


# Web applications



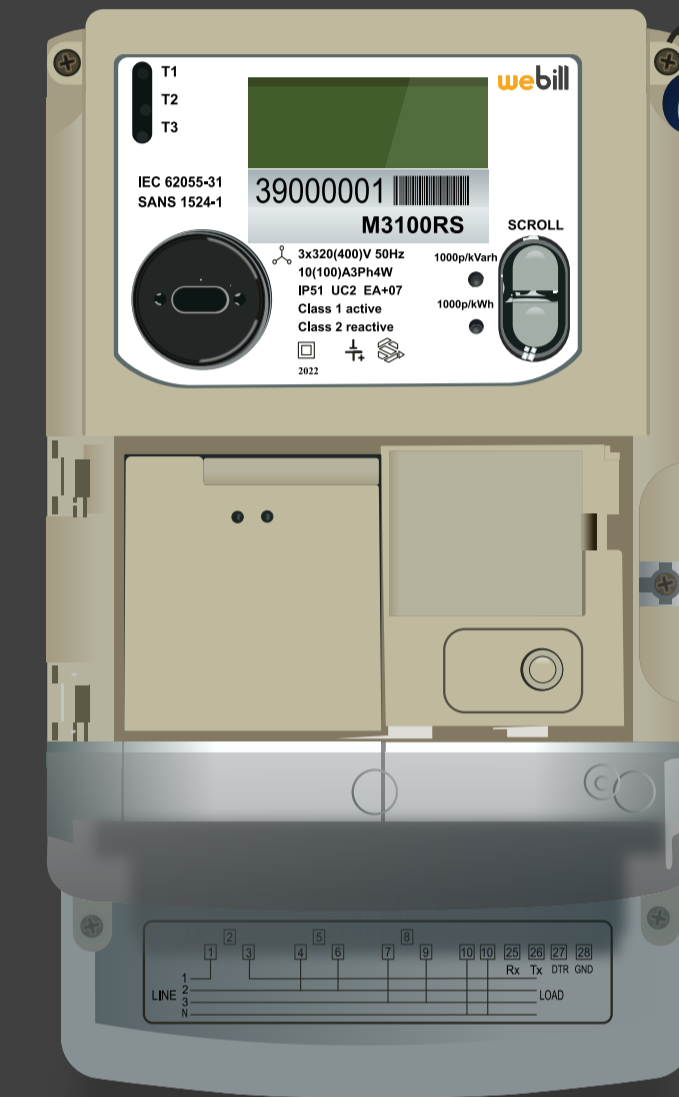
- **Value-Added Reseller (VAR) Portal:** Portal through which a VAR can add and manage their VAR customer organisations and track their income revenue streams.





## South African patent Single-Phase

- Hourly and Half Hourly Readings.
- Import and Export Consumption.
- Net-Metering.
- Relay.
- kWh.



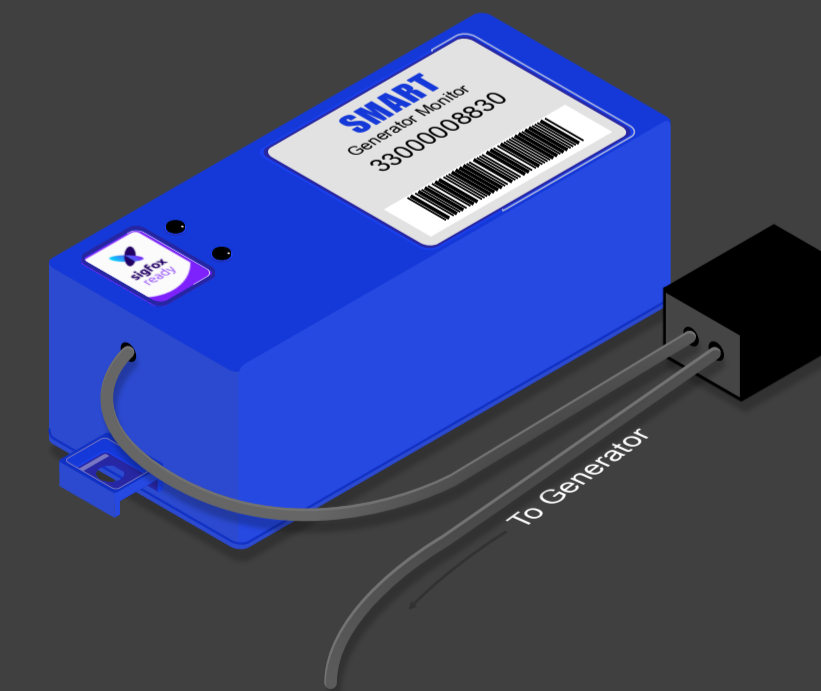
## Three-Phase

- Hourly and Half Hourly Readings.
- Relay.
- kWh.
- kVAh.
- kVA / kW.
- Monthly Maximum demand.
- Net-Metering.



## Water Monitor

- Hourly Kilolitre Readings.
- Excessive Consumption Alerts.
- Burst Pipe Alerts.
- Leakage Alerts.
- Leakage Amounts.



## Generator Monitor

- Monitors when your generator turns on and off.
- The system will be able to charge different
- Tariffs are based on whether the generator is on or off.
- Allows for accurate billing based on generator tariff.

# Certifications

Webill has invested 5 years and tens of millions of rands to reinvent the smart meter and provide a robust cloud-based infrastructure to support it.

Webill smart meters are locally manufactured using patented South African technology which is SABS, NERSA, ICASA and SANAS-approved.

The Webill smart meter was developed using world-class technology to provide the cheapest bi-directional smart meter available with the lowest operating costs.



ICASA Approved



SABS Approved



iSERT Sigfox  
Approved



YADAV Measurements  
Load Switch Approved

# We use the services of the following companies



Elixir Dev House  
/ Consultants



Chip Communication  
Manufacturer



Electronics  
Engineering



Legal



Patent Attorneys



Communication  
Network



Water Device  
Manufacturer



Meter  
Manufacturer



Logistics



Accountants



HR Department

# Our Market

---

## *Areas to be targeted 2023-2027*

<b>Country</b>	<b>Available Installation Base (SAM)</b>	<b>Targeted Base (SOM)</b>
South Africa	50 million	500,000
Nigeria	35 million	200,000
Rest of Subsaharan Africa	30 million	100,000
UK	30 million (smart meter)	100,000
Australia & New Zealand		50,000
Florida State, USA	12 million	50,000
Turkey	23 million (TEDAS)	50,000

*The above areas were chosen due to current prospects and potential regionally located VARs.*

webill

Contact Us

Wonderland Park,  
147 North Reef Road,  
Bedfordview, Johannesburg,  
South Africa, 1401

(+27) 11 284 0603 | [support@webill.net](mailto:support@webill.net)  
[www.webill.net](http://www.webill.net)